

Device Management System

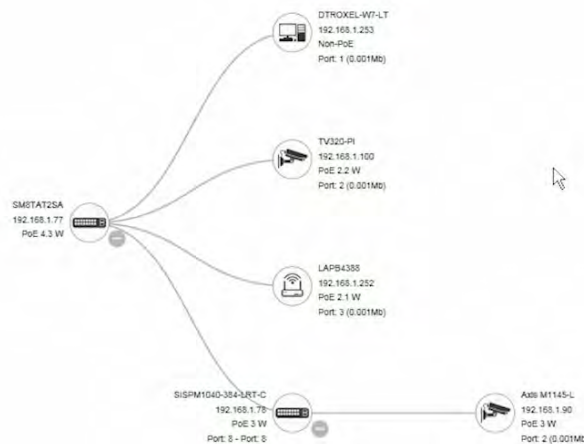
Transition Networks' portfolio of PoE enterprise and hardened switches has expanded to include the Device Management System (DMS) software that provides advanced tools necessary for total management of all connected network elements. Transition Networks' unique set of value-added features and capabilities provide security integrators with lower overall cost, less downtime, and easier management and maintenance of the entire PoE network.

Advanced Features

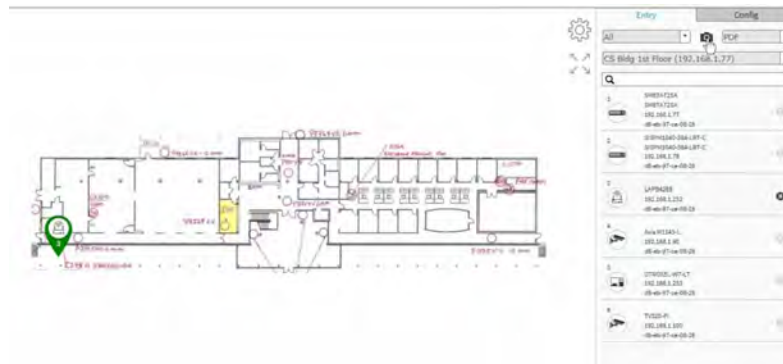
- Automatically discover and remotely configure attached IP-addressable powered devices (PD)
- Establish and document a baseline deployment
- Graphical topology view for device management
- Floor view for device management (import JPEG design drawings)
- Google Maps™ view for device management
- **Auto Power Reset** (APR) monitors and automatically restarts edge devices
- Troubleshoot cable and IP connection issues
- Monitor and analyze traffic by Day/Week/Port/Device
- Perform health checks with thresholds
- Auto-Alarm on error conditions

Feature Applications

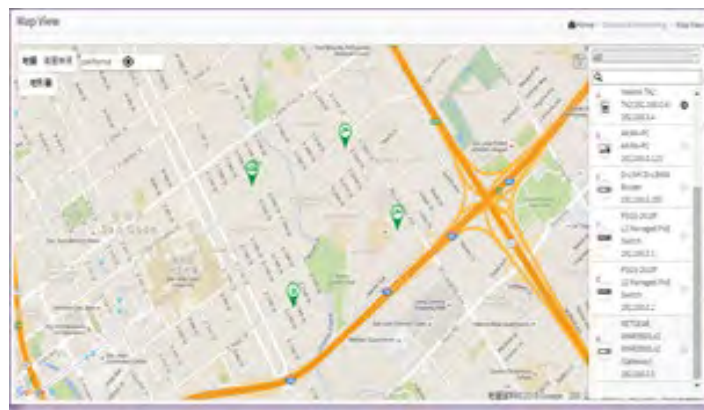
- Topology View provides end-to-end visibility of attached PD's with remote access into each device



- Floor View allows the designer to import existing JPEGs of the floor and site drawings into the DMS



- Google Maps™ View allows the PDs to be visible by State, City, and Street Address



Device Management

Direct Management of Attached PD

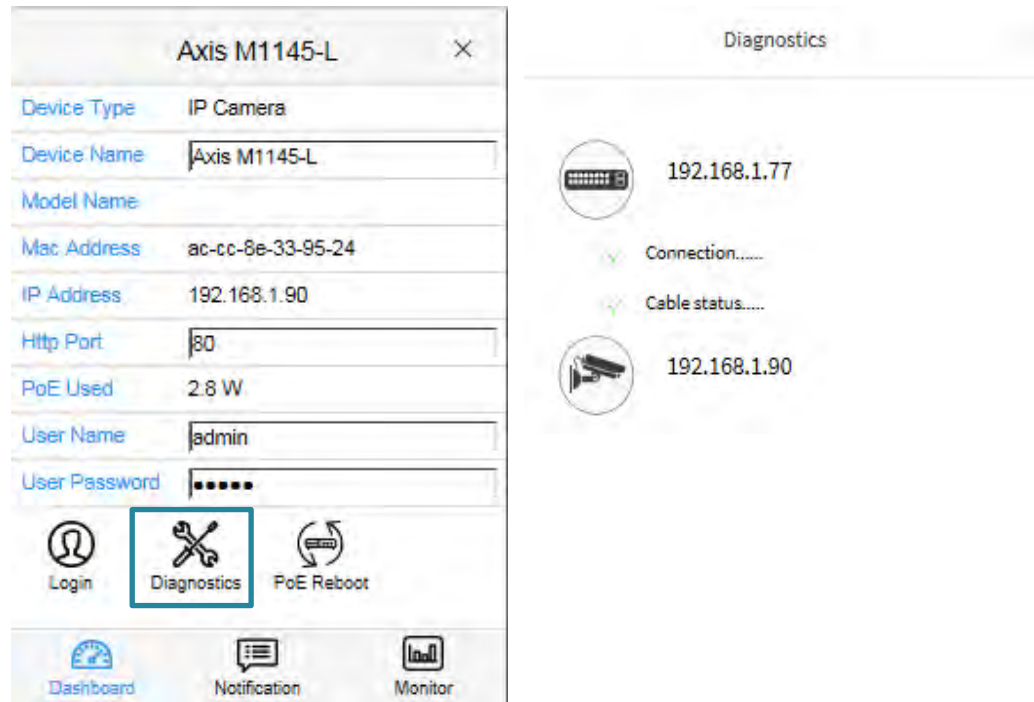
Transition Networks' DMS allows you to manage your PoE network by clicking on the device and using the pop-up window interface. It shows the Device Type, Device Name, MAC Address, IP Address, and PoE Wattage used by the PD. It incorporates a dashboard feature which also allows the user to remotely log in, configure, monitor, and reboot the PD. This provides direct management and control of the attached devices from the switch port interface.



Network Diagnostics

Enhanced diagnostics including IP connectivity and physical layer cabling checks and tests are available with the DMS:

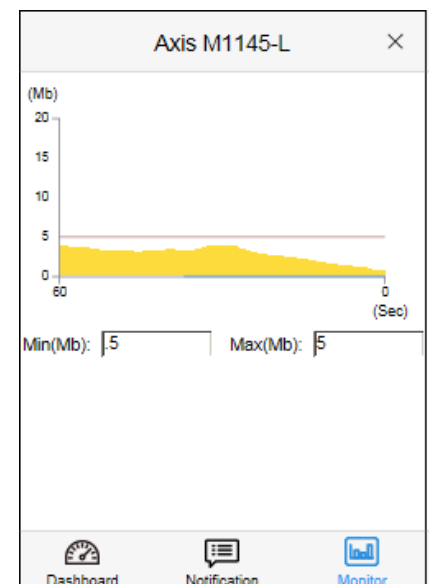
- One-click cable diagnosis
- One-click to check device alive
- Instant identification of faulty cable connections
- Convenient reboot of remote devices to resume operation



Network Monitoring

Real-time graphical monitoring of traffic and statistics, health checking of powered devices with ICMP ping “keep alive”, and auto-alarming for exceeded thresholds:

- Monitor traffic and packets of devices
- Analyze by day/week/port/device
- Perform health check by threshold
- Auto-alarming if abnormal condition exists



Current Products

Transition Networks' Device Management System is currently supported by these products:

Smart Managed Gigabit Ethernet PoE+ Switches

SM8TAT2SA

- (8) 10/100/1000Base-T PoE+ Ports, (2) 100/1000 SFP Slots

SM16TAT2SA

- (16) 10/100/1000Base-T PoE+ Ports, (2) 100/1000 SFP Slots

SM24TAT2SA

- (24) 10/100/1000Base-T PoE+ Ports, (2) 100/1000 SFP Slots

Managed Gigabit Ethernet PoE+ Switch

SM24TAT4XB

- (24) 10/100/1000Base-T PoE+ Ports, (4) 1G/10GBase-X SFP+ Slots

SM48TAT4XA-RP

- (48) 10/100/1000Base-T PoE+ Ports, (4) 1G/10GBase-X SFP+ Slots

Managed Gigabit Ethernet PoE++ Switch

SM24TBT2DPA

- (24) 10/100/1000Base-T PoE++ Ports, (2) 100/1000Base-X SFP/RJ-45 Combo Ports

Managed Hardened Gigabit Ethernet PoE+ Switches

SISPM1040-384-LRT-C

- (8) 10/100/1000Base-T PoE+ Ports, (4) 100/1000Base-X SFP Slots

SISPM1040-362-LRT

- (4) 10/100/1000Base-T PoE+ Ports, (2) 10/100/1000Base-T RJ-45 Ports, (2) 100/1000Base-X SFP Slots

Managed Hardened Gigabit Ethernet PoE+ Rack Mountable Switch

SISPM1040-3166-L

- (16) 10/100/1000Base-T PoE+ Ports, (4) 100/1000Base-X SFP Slots, (2) 1G/10GBase-X SFP+ Slots

SISPM1040-3248-L

- (24) 10/100/1000Base-T PoE+ Ports, (4) 100/1000Base-X SFP Slots, (4) 1G/10GBase-X SFP+ Slots

Managed Hardened Gigabit Ethernet PoE++ Switch

SISPM1040-582-LRT

- (8) 10/100/1000Base-T PoE++ Ports, (2) 100/1000Base-X SFP Slots

Managed Gigabit Ethernet Switches

SM24T6DPA

- (20) 10/100/1000Base-T Ports, (4) 100/1000Base-X SFP/RJ-45 Combo Ports, (2) 100/1000Base-X SFP Slots

SM24DPB

- (20) 100/1000Base-X SFP Slots, (4) 100/1000Base-X SFP/RJ-45 Combo Ports

Managed Gigabit Ethernet Fiber Switch

SM12DP2XA

- (12) 100/1000Base-X SFP Slots, (2) 1G/10GBase-X SFP+ Slots, (2) 10/100/1000Base-T RJ-45 Ports

SM24DP4XA

- (24) 100/1000Base-X SFP Slots, (4) 100/1000Base SFP/RJ-45 Combo Ports, (4) 1G/10GBase-X SFP+ Slots

Managed Hardened Gigabit Ethernet Switch

SISGM1040-284-LRT

- (8) 10/100/1000Base-T Ports, (4) 100/1000Base-X SFP Slots